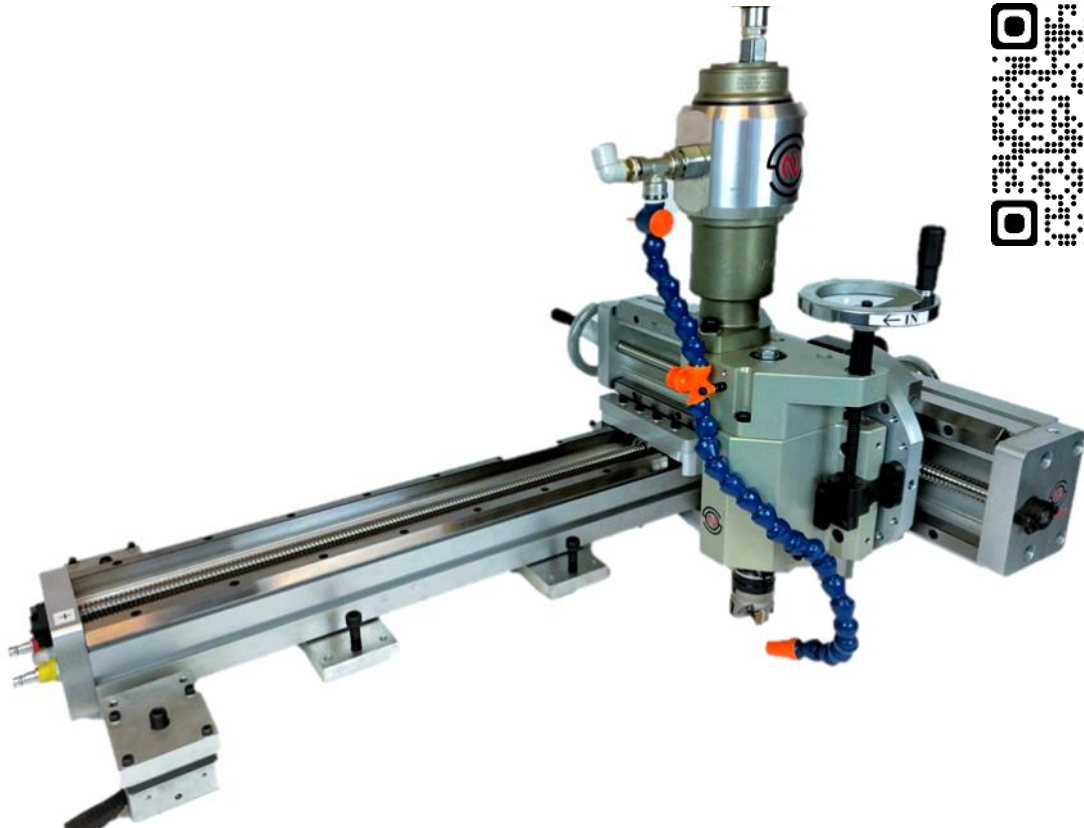


3-Axis Portable Milling Machine



- ⊗ Easily portable
- ⊗ Quick to assemble and dismantle on-site
- ⊗ Cold work - no sparking
- ⊗ Durable guide rails – no moving parts
- ⊗ Air cooling for mill cutter.
- ⊗ Comfortable and safe control system
- ⊗ Flexible mounting options

The Milling Machine has a light weight aluminium construction and it is equipped with high quality linear guideways and ball screws.

It is equipped with high quality air motors that power the machine reliably. The spindle can be quickly tilted +/-45 degrees. X-axis feed motor is protected from damage inside the frame, reducing the risk from damage.

Normaco Light Milling Machine is portable and pneumatically powered 3-axis milling machine.

It has been especially developed for applications where the extremely light weight of the machine is critical. For example for work in areas where the equipment must be carried by hand or rope access work.

The Portable Milling Machine is easily separated into portable sized parts each weighing under 30 kg and thus it can be easily carried to the job site. Dismantling and re-assembly takes only few minutes.

The Portable Milling Machine is mounted directly to the work piece by bolting, welding or using a magnet base. It can also be secured with vacuum pads that allow the mounting to an non-ferrous material and without damaging the mounting area.

Pneumatic motor and low milling cutter speed make it possible to use the portable milling machine in areas where cold work is a requirement.



normaco
Portable Machining Tools

3-Axis Portable Milling Machine

Exhaust air flow direction adjustable away from the operator.

Powerful and reliable pneumatic motors.

Air cooling system for tool.

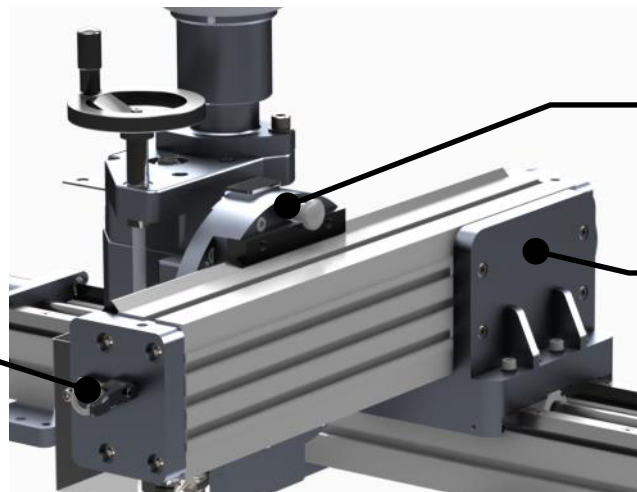
BT30 spindle accepts standard tooling.



Each axis features a locking system for increased stability.

Spindle tilts +/- 45 degrees.

Y-axis can be easily rotated from one side to the other.



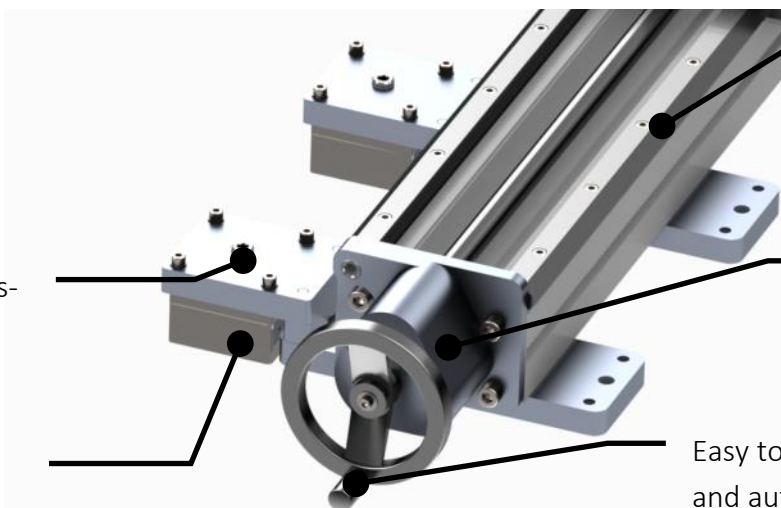
Easy levelling system.

Rigid guide rails, without moving components.

Feed motor protected in side the frame

Light & compact magnet clamping.

Easy to switch between manual and auto feed.



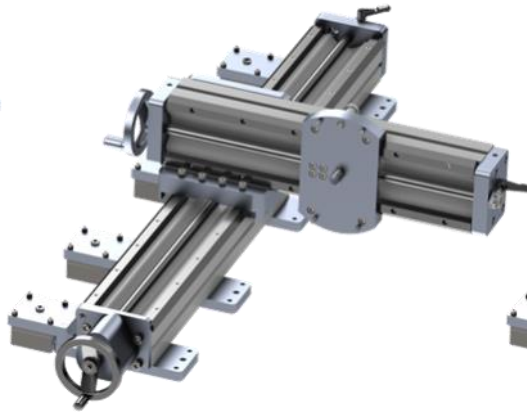
Easy and fast assembly in 3 steps

1.



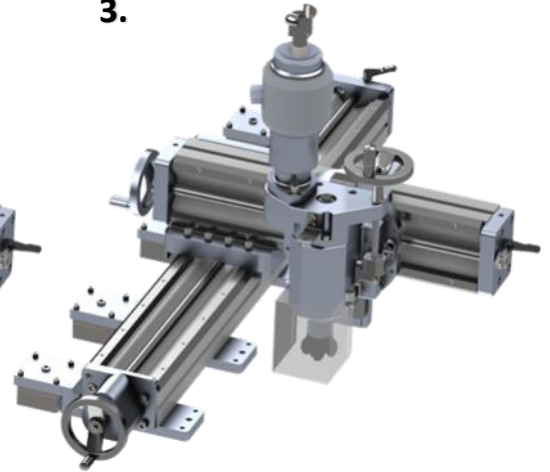
X-axis is place on the work-piece with mounting plates.

2.



Y-axis is mounted on to the X-axis.

3.



Z-axis is mounted on to the Y-axis.

Control Unit

The control unit is used to control the Portable Milling machine air motors. It features spindle start/stop function, and directional control for the X-axis feeding as well as speed control for the X-axis.

The control unit makes it comfortable and safe to use the milling machine.

The unit provides safety functionality such as prevention of accidental start-up and emergency stop to, keeping the operator safe.

Air filter/lubricator such as [Normaco Air Treatment set](#) Must be used with the control unit to provide clean air supply and lubrication for the components and motors.



Technical Data

Dimensions	360 x 480 x 172mm
Weight	12 kg
Functions	Spindle start/stop
	Feed control X+ / X- / stop
	Feed speed control
	Manometer
	Accidental start-up prevention Emergency stop

3-Axis Portable Milling Machine

Mounting Options:
Standard:
Welded or bolted base
Optional;
Magnet base 300kg
Magnet base 600kg
Vacuum clamping



Normaco 3-Axis Portable milling machine is supplied as standard with X-axis auto feed, but it can be delivered without the auto-feed function also.

The axis travel lengths can be also adjusted according to the customer requirement, please contact sales@normaco-tools.com for more information.

Part Nr.	Variants	X-axis feed	Control Unit
301490	3-Axis Portable Milling Machine with Auto feed	Pneumatic / manual	Yes
301490-1	3-Axis Portable Milling Machine with Manual Feed	Manual	No

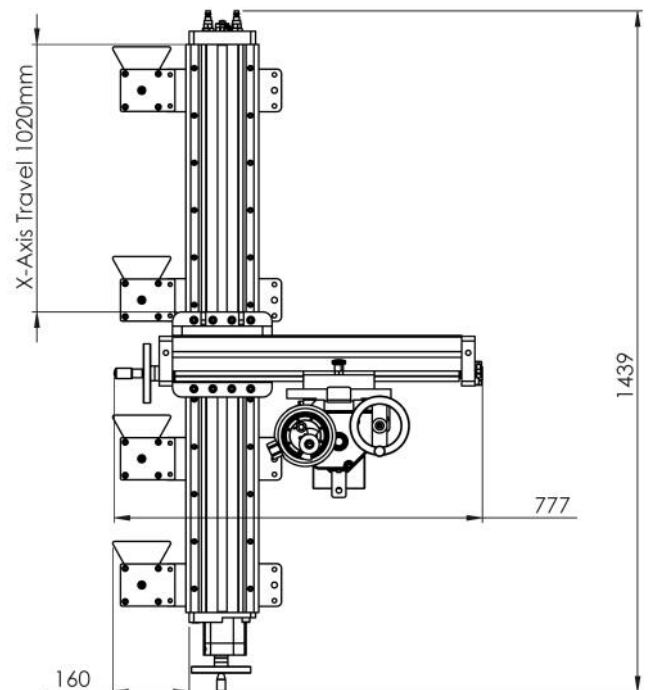
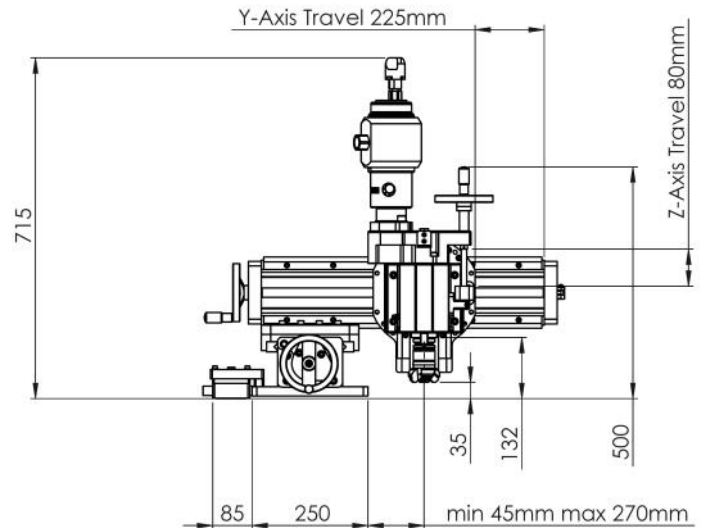


Standard Machine Delivery includes
Milling machine with Spindle Motor
Pneumatic Control unit
Transport and storage box
Analogue indicator for depth measurement
DIN standard lifting bolts (certified optional)
Set of hand tools for operating the machine
Air cooling system
Welded or bolted base
CE certification and operation manual

3-Axis Portable Milling Machine

Technical Data of the Standard Machine	
Travel	X-travel: 1020 mm
	Y-travel: 225 mm
	Z-travel: 80mm
Feed	X-axis: pneumatic 0.1kW & manual
	Y-axis: manual
	Z-axis: manual
Spindle	Ratio: 1:1
	Motor: Pneumatic 3kW
	Depth measurement with analogue read-out
	Spindle BT30
	850rpm
	Cooling
Tooling	Face mill max diameter 50 mm
	End mill max diameter 20mm

Weights	Operational weight: 75 kg
	X-axis assembly: 30 kg
	Y-axis assembly: 20 kg
	Z-Axis assembly: 25 kg
	Transport weight: 180 kg





normaco

Portable Machining Tools

3-Axis Portable Milling Machine



normaco

Normaco Tools OÜ

Sinikivi tee 12

Lehmja küla, Rae vald

75306, Estonia

sales@normaco-tools.com

+372 6003704

www.normaco-tools.com