



- ⊗ Easily portable
- ⊗ Quick to assemble and dismantle on-site
- ⊗ Cold work - no sparking
- ⊗ Durable guide rails – no moving parts
- ⊗ Air cooling for mill cutter.
- ⊗ Flexible mounting options

The Milling Machine has a light weight aluminium construction and it is equipped with high quality linear guideways and ball screws.

It is equipped with high quality air motors that power the machine reliably. The spindle can be quickly tilted +/-45 degrees.

Normaco Light Milling Machine is portable and pneumatically powered 2-axis milling machine.

It has been especially developed for applications where the extremely light weight of the machine is critical. For example for work in areas where the equipment must be carried by hand or rope access work.

The Portable Milling Machine is easily separated into portable sized parts each weighing under 30 kg and thus it can be easily carried to the job site. Dismantling and re-assembly takes only few minutes.

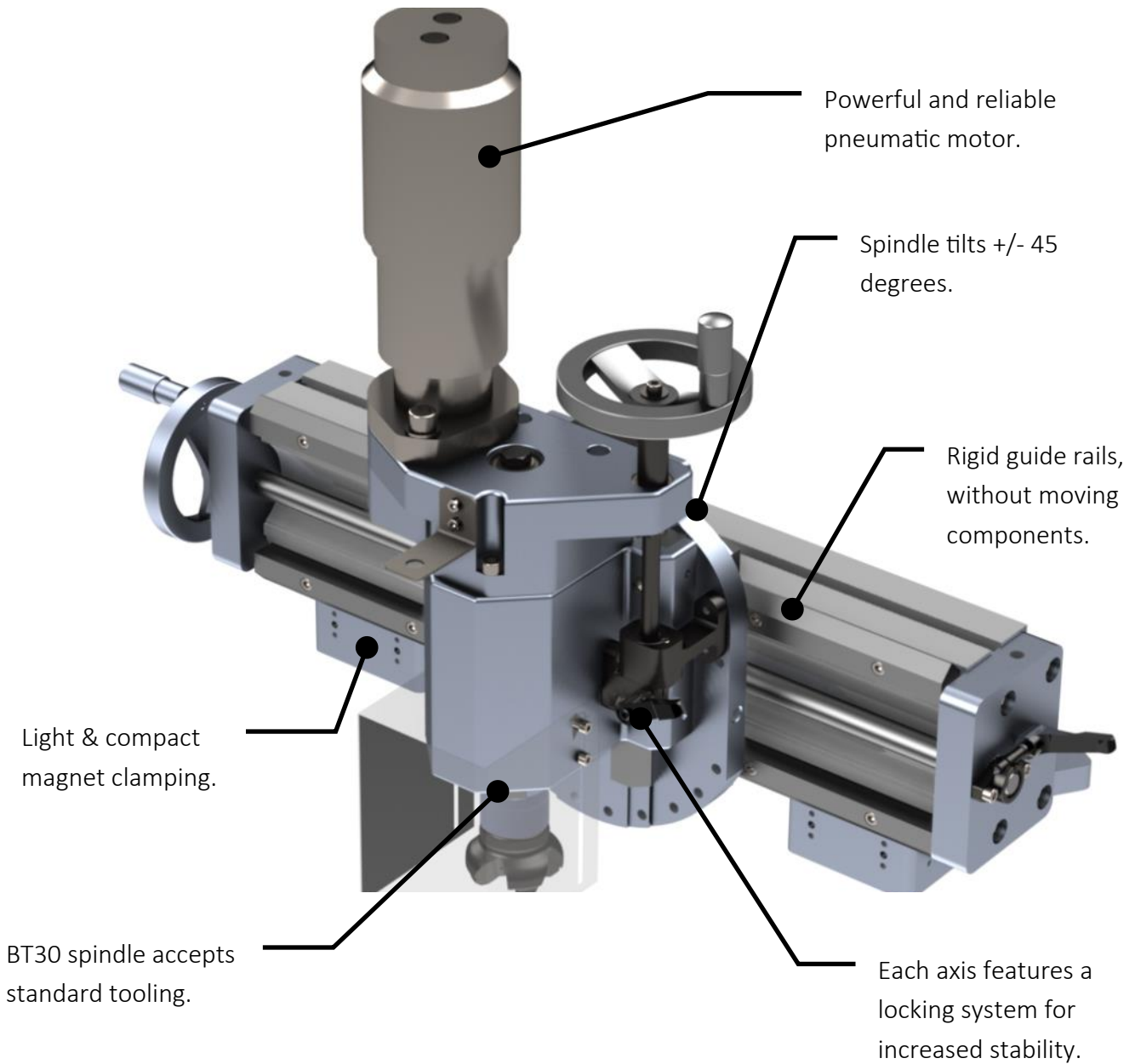
The Portable Milling Machine is mounted directly to the work piece by bolting, welding or using a magnet base. It can also be secured with vacuum pads that allow the mounting to an non-ferrous material and without damaging the mounting area.

Pneumatic motor and low milling cutter speed make it possible to use the portable milling machine in areas where cold work is a requirement.

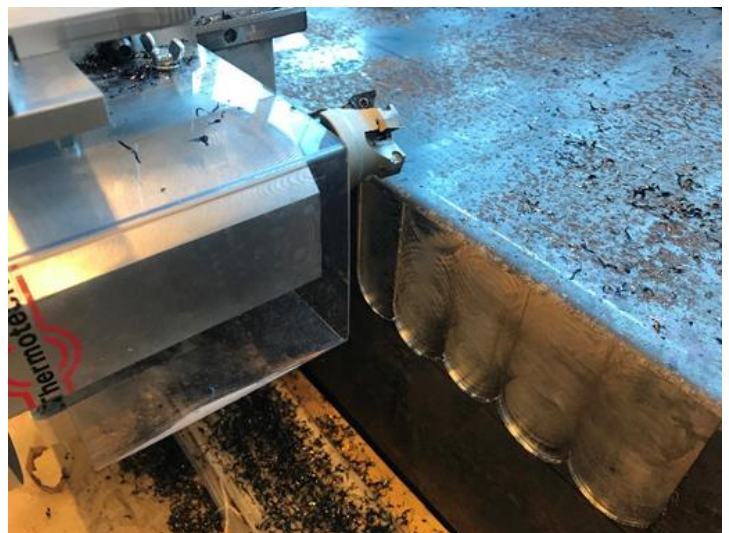


normaco
Portable Machining Tools

2-Axis Portable Milling Machine

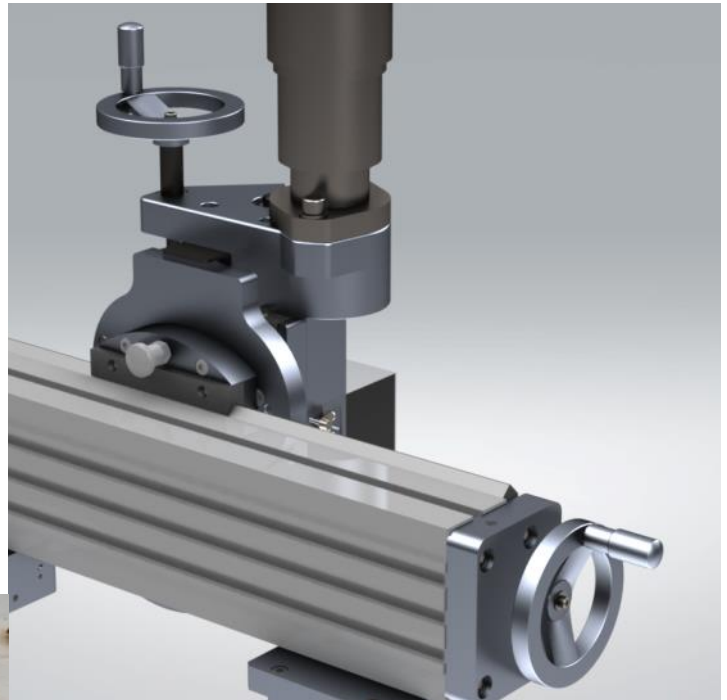


Mounting Options:
Standard:
Welded or bolted base
Optional;
Magnet base 300kg
Magnet base 600kg
Vacuum clamping



2-Axis Portable Milling Machine

Standard machine delivery includes
Milling machine with Spindle Motor
Transport and storage box
Analogue indicator for depth measurement
DIN standard lifting bolts (certified optional)
Set of hand tools for operating the machine
Air cooling system
CE certification and operation manual



Technical Data of the Standard Machine	
Travel	X-travel: 460 mm *
	Z-travel: 80mm
Feed	X-axis: manual
	Z-axis: manual
Spindle	Motor: Pneumatic 3kW
	Depth measurement with analogue read-out
	Spindle BT30
	850rpm
Tooling	Air Cooling
	Face mill max diameter 50 mm
	End mill max diameter 20mm

Weights	Operational weight: 51 kg
	X-axis assembly: 20 kg
	Z-Axis assembly: 25 kg
	Transport weight: 80 kg

* length of continuous travel depends on mounting options.

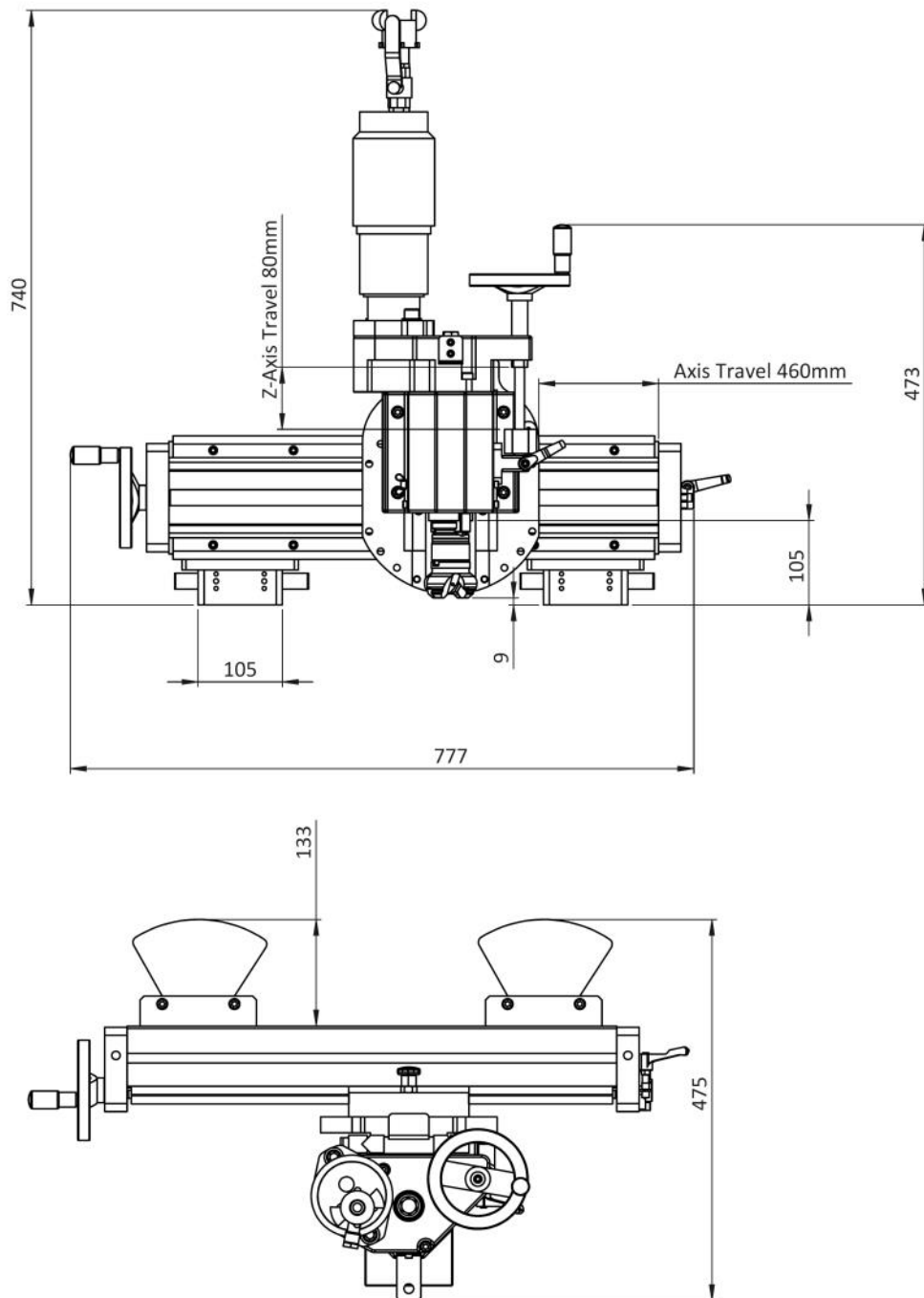
Spindle air motor must be used with Normaco Air safety device to maintain air motor warranty and CE-compliance.

All information contained in this document is subject to change without prior notice



normaco
Portable Machining Tools

2-Axis Portable Milling Machine



Normaco Tools OÜ

Sinikivi tee 12
Lehmja küla, Rae vald
75306, Estonia

sales@normaco-tools.com

+372 6003704

www.normaco-tools.com