

- ⊗ Portable and light weight.
- ⊗ Simple construction, easy to maintain.
- ⊗ Boring range from  $\varnothing$  45mm to 150mm.
- ⊗ Electric or pneumatic motor.
- ⊗ Manual or electric Feeding
- ⊗ Configurable

## Normaco NLB40 Line Boring Machine

The Normaco NLB40 Line Boring Machine is a versatile and portable tool designed for precision machining of in-line bores. It features a powerful drive unit that can be equipped with either an electric or pneumatic motor, giving you the flexibility to choose based on your operational needs.

The machine offers manual feeding through a convenient hand wheel, ensuring user control during the machining process. With quick centering aided by specially designed centering cones, the setup is fast and efficient.



# Line Boring Machine



The NLB40 Line Boring Machine is commonly used in industries such as heavy equipment repair, construction, and shipbuilding, where in-place machining is crucial. It excels at restoring bores in worn or misaligned pivot points, hinge holes, or other cylindrical parts of large machinery. From earth-moving equipment to industrial turbines, this machine delivers reliable performance in demanding environments.

Customizable to meet a wide range of applications, the NLB40 can be easily configured by selecting the appropriate components, making it an adaptable solution for various line boring tasks.



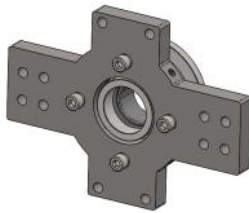
**normaco**  
Portable Machining Tools

# Line Boring Machine



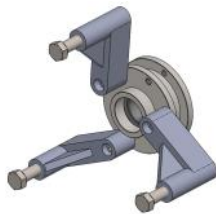
## Drive Unit

- Electric or pneumatic motor
- Linear guide bars
- Feeding with handwheel.



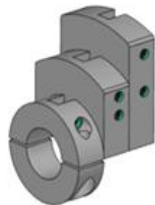
## Adjustable bearing mounts with mounting plates.

- Bearings adjusted radially
- Tilting bearings
- 2 pcs minimum required



## Fixed bearing mount with mounting arms

- Fixed bearings
- 2 pcs minimum required



## Tool Holders

- For bigger bore diameters.
- Square tooling can be used



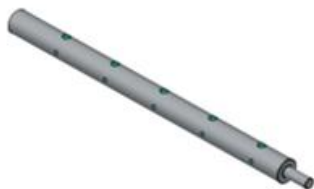
## Centering cone set

- Diameter range 45-150
- Screw locking
- 2 pcs required



## Tightener set

- For fixing centering cones during setup
- 1pc required



## Boring Bars

- D40mm, tool port 12mm, pitch 100mm
- Lengths: 1000mm, 1600mm, 2000mm or custom

Technical Data	
Boring range	Ø 45-150mm
Operational weight	~45 kg
Shipping weight:	~70 kg

Feed Unit	
<b>Motor:</b>	<ul style="list-style-type: none"> <li>• Electric 1.8kW 60- 470rpm</li> <li>• Pneumatic 2.5kW</li> </ul>
Feeding	<ul style="list-style-type: none"> <li>• Manual</li> <li>• Servo Electric with remote</li> </ul>
Max feed stroke	360mm

Basic kit	
Drive unit Electric 230v	
Boring bar 1.6m	
Centering cone sets (2pcs)	
Tightener set (1pc)	
Bearing mounts (2pcs)	
Crate	
CE certification and operation manual	

Boring Bar	
<b>Length</b>	1000mm / 1600mm / 2000mm
Diameter	40mm
Tool port	Ø12mm, pitch 100mm

