



**normaco**  
Portable Machining Tools

## Flange Bolt Cutting Saw



- ⊗ One machine cuts bolts up to M72
- ⊗ Cold work without sparking
- ⊗ Light weight - Easily portable
- ⊗ Easy and safe to use

Flange Bolt Cutting Saw is clamped around the flange with a light and easy clamping system. The machine can be mounted both in horizontal or vertical orientation.

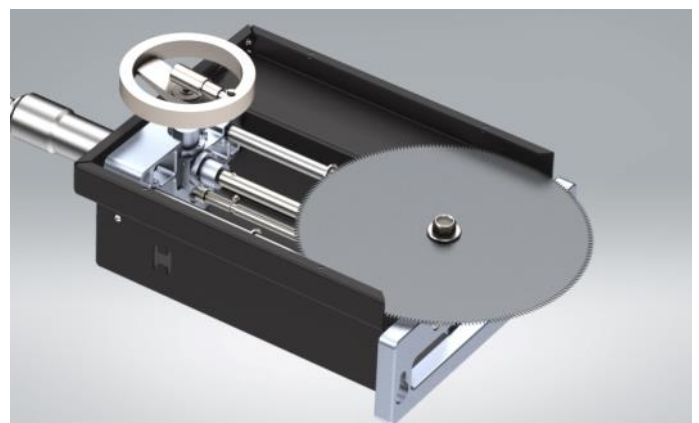
The cutting disc is fed by a handwheel providing stable and constant feed rate that optimizes the lifetime of the tool and the speed of the cut. Low speed of the disc and use of coolant make the work spark-free.

As a standard the Flange Bolt Cutter is equipped with a air motor and must be used with the Normaco Air Safety device to maintain CE-marking and motor warranty.

**Normaco Flange Bolt Cutting Saw** is a machine for cutting of bolts on flanges. It offers an easy way to remove bolts that cannot be opened due to corrosion.

Flange Bolt Cutting Saw has a extremely light weight. Due to its modular construction it can be quickly dismantled into parts that a single operator is able to carry by hand.

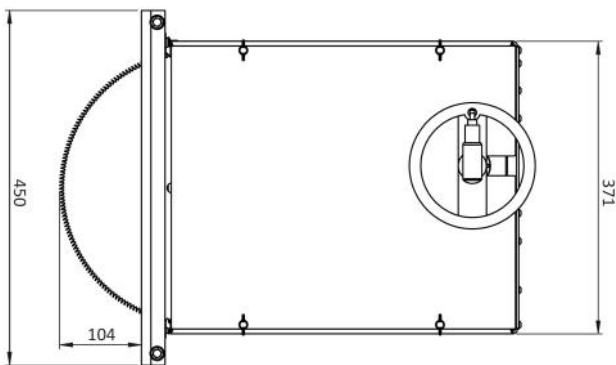
With one machine it is possible to cut all bolt sizes up to M72. When using nut splitters several heads are typically required to cover the same range, increasing the size of the investment.



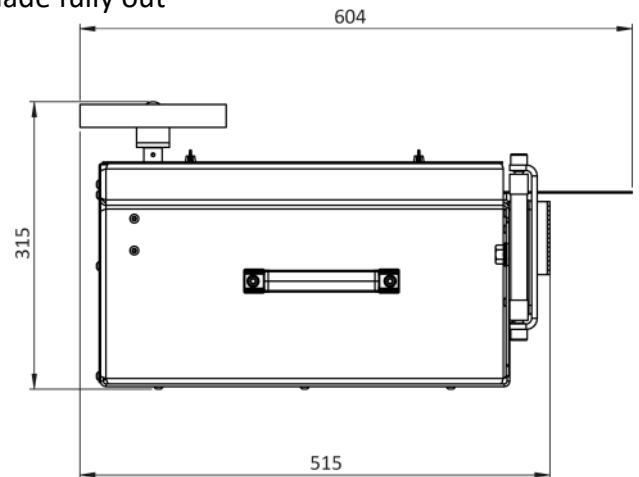
# Flange Bolt Cutting Saw

## Technical Data:

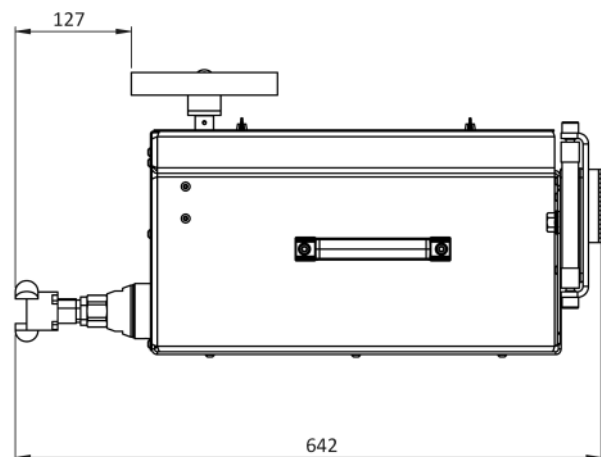
<b>Disc diameter</b>	Max Ø 350 mm
<b>Motor</b>	Pneumatic 0.8kW
<b>Blade free speed</b>	47rpm
<b>Air consumption</b>	1,6 m3/min @ 5 bar
<b>Max cutting dept</b>	104 mm
<b>Max bolt size</b>	M72
<b>Max flanges (acc ANSI B16.5)</b>	2500lbs 12"
	1500lbs 18"
	900lbs 26"
	600lbs 36"
	400lbs 40"
<b>Flange diameter clamp- ing range</b>	Max D1400 mm
	Min D250 mm
<b>Weight</b>	Mounting base 6 kg
	Cutting unit 30 kg
	Total: 36 kg



Blade fully out



Blade fully in



### Machine delivery includes

- Machine with motor
- HSS Saw blade 1pcs
- Clamping system for flanges
- CE certification and manual
- Set of hand tools

